

**SOILS AND GEOLOGY REPORT ADDENDUM**  
US-441/STATE ROUTE 71 FROM  
US-411 (SR 35/ SR358) TO MACON LANE  
SEVIER COUNTY  
PROJECT NO. 78008-1244-14  
PIN NO. 104959.01

Executive Summary

The following addendum is to be incorporated with the original Geotechnical Report for the redesign of State Route 71 (Chapman Hwy.) from US 411 (SR 35/SR358) to Macon Lane in Sevier County. The project consists of widening the existing roadway and realigning an intersection for safety. In addition to the recommendations included in the original Geotechnical Report, it is recommended that the poor fill material (tires, wooden poles and concrete) from Station 41+75 to Station 42+25 of Valerie Way be excavated and replaced with suitable borrow material. It is also recommended that the guardrail retaining wall from approximately Station 167+80 to Station 168+80 left of centerline be removed.

**SOILS AND GEOLOGY REPORT ADDENDUM**  
US-441/STATE ROUTE 71 FROM US-411  
(SR 35/ SR 358) TO MACON LANE  
SEVIER COUNTY  
PROJECT NO. 78008-1244-14  
PIN NO. 104959.01

Introduction

The following addendum to the original report contains additional recommendations for State Route 71 (Chapman Hwy./US 441) from US 411 (SR 35/ SR 358) to Macon Lane in Sevier County. During the initial investigation two small sites near Valerie Way and Chapman Hwy. were overlooked due to vegetation overgrowth.

Recommendations and Discussion

At Site 1 there is a small guardrail retaining wall (refer to Figure 2) approximately 12 ft. in length located from approximately Station 167+88 to Station 168+00 (refer to Figure 1) left of centerline of SR 71 (Chapman Hwy). It is recommended that the wall be removed before the embankment is widened.

At Site 2, a slope/retaining feature (refer to Figure 3) made of old wooden utility poles, tires and concrete is located at the outlet end of the cross drain pipe from approximately Station 41+75 to Station 42+25 (refer to Figure 1) right of centerline of Valerie Way. It is recommended that all of this poor material (wood, concrete and tires) be removed and replaced with suitable borrow material.

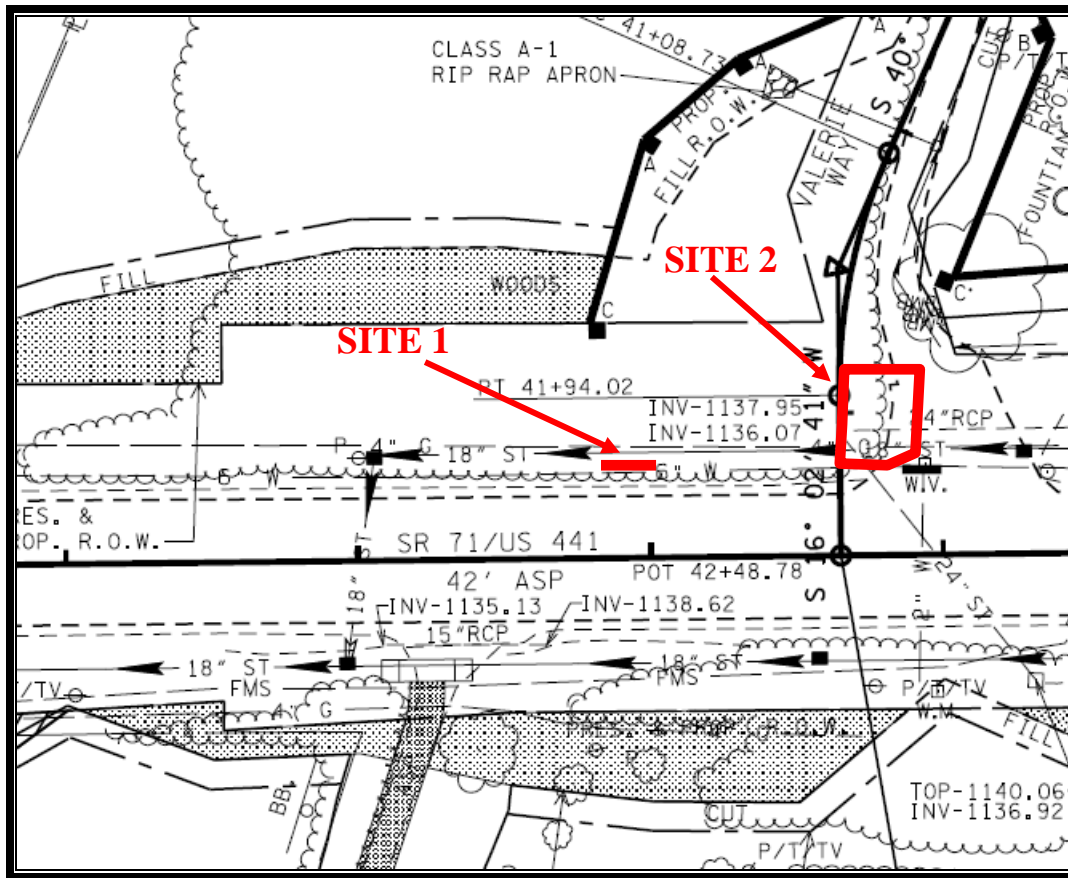


Figure 2 Site 1 - Guardrail retaining wall to be removed.



Figure 3 Site 2 - Poor fill material to be removed.

As in the original report, it is recommended that no slopes be placed at steeper than a 2:1 ratio. It is also recommended that a note be added to the plans to advise the contractor to follow *TDOT Standard Specifications For Road and Bridge Construction* Section 205 –Embankments when extending the existing fills. If additional information is needed please contact the Geotechnical Engineering Office.



Lori Fiorentino, PE  
Transportation Project Specialist Senior

David Barker, PE  
Civil Engineering Manager 1

LF  
December 1, 2016